



# WASTE MANAGEMENT



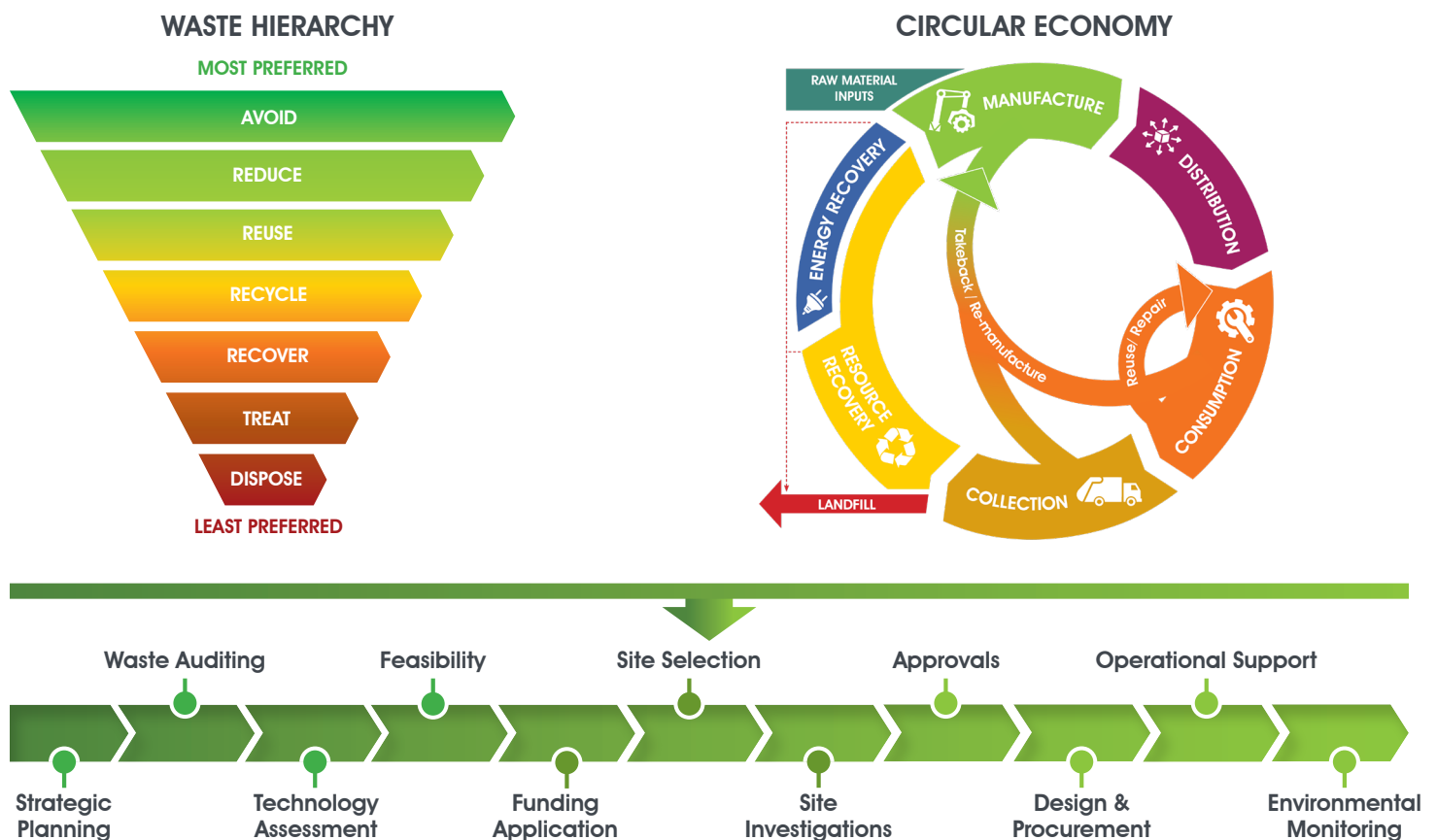
# TALIS CONSULTANTS

## Who We Are

Talis was established in 2012 and is a versatile consultancy with over 100 staff with a particular focus on client services across the public and private sectors. We are a multidisciplinary team with established capabilities in the areas of:

• **ASSETS** • **ENVIRONMENT** • **ENGINEERING** • **SPATIAL** • **NOISE** • **WASTE**

## Concepts that Drive Our Management Services



# Meet the Management Team

Our management team is a dynamic group of individuals with extensive and varied expertise in waste management. Their diverse backgrounds, coupled with their deep industry knowledge, make them exceptionally well-suited to address the complexities and challenges within the waste management sector. Their collective experience and commitment to sustainability and the concept of a circular economy ensures that we effectively navigate and innovate in this critical field, driving forward solutions for a cleaner, more efficient and environmentally responsible future.



**RONAN CULLEN**  
**DIRECTOR & NATIONAL WASTE LEAD**

Ronan is a co-founder of Talis with 20+ years of consulting experience in waste and resource recovery. He specialises in Waste Strategy, Waste Infrastructure Planning and Delivery and Waste Contracts and Procurement.



**ALEX UPITIS**  
**STRATEGY & CIRCULAR ECONOMY TEAM LEAD (EAST COAST)**

Alex delivers sustainable waste management services to local government and commercial waste companies. His strategic direction in waste management provides the foundation for implementing waste infrastructure projects.



**JONATHAN BECKETT**  
**DEPUTY STRATEGY & CIRCULAR ECONOMY TEAM LEAD (EAST COAST)**

Jonathan has 28+ years' experience in State & Local government, private sector, and consulting. He has run his own consultancy firm and delivered several organics, resource recovery, waste strategies & environmental compliance projects.



**KARTIK VENKATRAMAN**  
**WASTE TEAM LEAD (QLD)**

Kartik has over 20 years' experience in environmental sustainability and waste resource efficiency. He has held senior local government positions and also worked for his own consultancy. Kartik holds a PhD in landfill phytocaps.



**COLLEEN PANIZZA**  
**WASTE INFRASTRUCTURE TEAM LEAD (WA)**

Colleen has over 10 years of experience in the environmental and engineering sector including both operational and consultancy roles. Colleen specialises in the delivery of recycling and waste management infrastructure projects, including landfills, waste transfer stations and more.



**RACHEL HAYTON**  
**STRATEGY & CIRCULAR ECONOMY TEAM LEAD (WA)**

Rachel is a senior consultant with more than 8 years of experience in sustainable waste management and resource recovery. She specialises in circular economy strategies, compositional waste auditing, resource recovery plans, waste education and operational waste management.



**CHRIS STANNARD**  
**DEPUTY WASTE INFRASTRUCTURE LEAD (WA)**

Chris is an environmental project manager and chartered waste professional with 18 years' experience in consultancy, specialising in landfill and containment systems design, approval, procurement, construction supervision and quality assurance.



**COURTNEY WILLIAMS**  
**WASTE TEAM LEAD (ACT)**

Courtney has 12+ years of waste management experience in approvals, strategy development, waste contracts, compliance and waste infrastructure and has developed business cases for several capital works projects.





## Strategy and Circular Economy

Talis recognises the importance of planning for the future and advancing waste management systems to resource recovery programs. This can be challenging in the ever evolving waste industry, however Talis specialises in devising tailored solutions for each of our clients to move towards a more circular economy. Waste awareness and education is fundamental to the successful implementation of resource recovery strategies, along with monitoring through waste data gathering and reporting frameworks.



**WASTE MANAGEMENT  
PLANS**



**RESOURCE  
RECOVERY**



**CONTRACTS AND  
PROCUREMENT**



**WASTE STRATEGY**



**WASTE AUDITING**



**FEASIBILITY  
ASSESSMENT**



**FUNDING  
APPLICATION**



**REGULATORY DATA  
REPORTING**



**WASTE SERVICE  
REVIEW**



**EDUCATION &  
ENGAGEMENT**



Determining the most appropriate and effective method in which to deliver a kerbside FOGO collection and processing service is critical to its success. Based on our experience, Talis understands the critical steps and mechanisms that need to be in place prior to committing to the delivery of such a service as well as the steps and tools needed from service roll-out to ongoing delivery.





# Waste Infrastructure

The Talis Team has the skill sets as well as extensive experience in the delivery of all types of recycling and waste management infrastructure facilities from site selection through to acceptance of waste and finally rehabilitation. Importantly, as a team of waste management professionals, Talis knows what is essential to the full lifecycle of waste management infrastructure.



**SITE SELECTION & INVESTIGATION**



**FEASIBILITY STUDIES & COST ESTIMATES**



**APPROVALS & EIA**



**DESIGN & PROCUREMENT**



**ENVIRONMENTAL MONITORING & REPORTING**



**FUNDING APPLICATIONS**



**COMMUNITY CONSULTATION**



**QUALITY ASSURANCE**



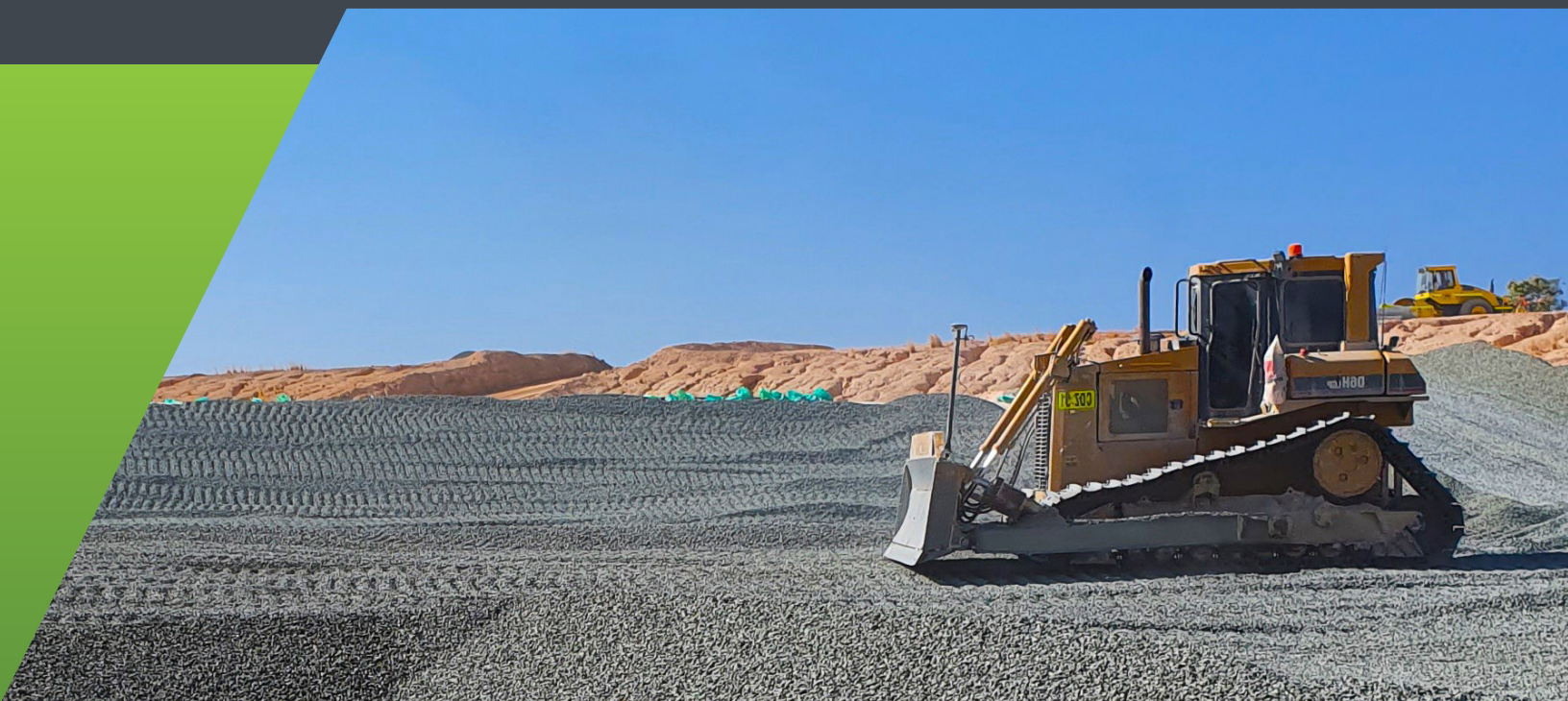
**CONSTRUCTION SUPERVISION**



**LANDFILL CLOSURE**

## TYPES OF FACILITIES DELIVERED

- Community recycling centres
- Composting plants
- Advanced thermal treatment
- Landfills (inert, putrescible & hazardous)
- Materials recovery facilities
- Inert recycling facilities
- Anaerobic digestion
- Waste transfer stations







## Key Projects Delivered

### Strategy and Circular Economy Projects

#### **DEPARTMENT OF WATER AND ENVIRONMENTAL REGULATION**

Infrastructure Needs Analysis

#### **WASTE AUTHORITY**

The Pilbara & Broome Waste Data Study

#### **NORTH EAST WASTE & RESOURCE RECOVERY GROUP**

Regional Waste & Resource Recovery Implementation Plan

#### **WESTERN AUSTRALIA RETURN RECYCLE RENEW LTD**

State Wide Container Deposit Scheme Audits

#### **GREAT SOUTHERN GROUP**

Resource Recovery & Residual Waste Strategy

#### **CANBERRA REGION JOINT ORGANISATION (CRJO)**

Regional Waste and Sustainable Materials (WaSM) Strategy

#### **SCENIC RIM REGIONAL COUNCIL**

Disaster Waste Management Plan

#### **MAIN ROADS WESTERN AUSTRALIA**

MRWA Circular Economy Secondment

#### **QUEENSLAND INVESTMENT CORPORATION**

QIC Waste Procurement

#### **EASTERN METROPOLITAN REGIONAL COUNCIL**

Resource Recovery Project – Energy from Waste Supply Agreement

#### **CHEVRON**

Waste Management Services Contract

#### **MACARTHUR STRATEGIC WASTE ALLIANCE**

Regional Organics Feasibility Study

#### **KINGS PARK**

Public Park Bin Audit and Waste Compositional Study

#### **SUTHERLAND SHIRE COUNCIL**

20 Year Waste and Resource Recovery Strategy

#### **KIMBERLEY REGIONAL COUNCIL**

Waste Collection Services and Facility Operation Contract

#### **SUTHERLAND SHIRE COUNCIL**

20 Year Waste and Resource Recovery Strategy 2021 – 2041

#### **REGIONAL GROWTH DEVELOPMENT CORPORATION NSW**

Parkes Special Activation Precinct Energy from Waste Project



# Waste Infrastructure Projects

Our project experience spans across a spectrum of waste infrastructure projects, highlighting our proficiency in recycling, landfill management, waste-to-energy, and more. They display our technical expertise in delivering comprehensive waste infrastructure solutions that address the complexities of waste collection, processing, and disposal.

## **REGIONAL GROWTH NSW DEVELOPMENT CORPORATION**

Parkes Energy from Waste Facility Procurement

## **CITY OF STIRLING**

Balcatta Recycling Centre & Waste Transfer Station – Redevelopment Project: Feasibility Study, Approvals, Design and Construct Tender Document

## **OPAL VALE LANDFILL**

Cell 3 & 4 Detailed Design, Approvals, Closure Plan and Construction Quality Assurance

## **SHOALHAVEN CITY COUNCIL**

Materials Recovery Facility - Business Case & Funding Application

## **TOWN OF PORT HEDLAND**

South Hedland Community Drop-Off – Feasibility Study, Approvals & Detailed Design

## **RICHMOND VALLEY COUNCIL**

Nammoona Waste and Resource Recovery Facility, Cell 6A development - Superintendent for the construction of Cell 6A, including the piggyback from existing Cells 3 and 4

## **ISAAC REGIONAL COUNCIL**

Landfill Gas Specification and Procurement Support

## **SHIRE OF ASHBURTON**

Pilbara Regional Waste Management Facility – Site Selection, Feasibility Study, Site Investigations, Approvals, Detailed Design, Procurement, Construction Superintendent, Construction Quality Assurance, Operational Contract

## **SHIRE OF BROOME**

Regional Resource Recovery Facility (Landfill and Recycling Centre) – Site Selection, Site Investigations, Financial Feasibility & Community Consultation

## **TAMWORTH REGIONAL COUNCIL**

Forrest Road Landfill Master Plan, Closure Plan, Leachate & Stormwater Management Plan

## **SOILCO**

South Nowra Organics Facility – Leachate and Stormwater Management System: Design, Approvals and Construction Support

## **MID-NORTH COAST JOINT ORGANISATION**

Circular Economy Centre of Excellence – Feasibility Study and Conceptual Design

## **SHIRE OF ESPERANCE**

Esperance Material Recovery Facility, Waste Transfer Station & Community Recycling Centre: Approvals and Detailed Design



## LOCATIONS

### PERTH OFFICE (H/O)

604 Newcastle St,  
Leederville WA 6007  
PO Box 454, Leederville WA 6903

### NOWRA OFFICE

76 Bridge Rd,  
Nowra NSW 2541  
PO Box 1189, Nowra NSW 2541

### NEWCASTLE OFFICE

58 Cleary St,  
Hamilton NSW 2303

### BRISBANE OFFICE

Level 4 35 Boundary St,  
South Brisbane QLD 4101

### OPERATING BASES

Hobart | Kalgoorlie | Melbourne | Sydney



1300 251 070



[talisconsultants.com.au](http://talisconsultants.com.au)



[enquiries@talisconsultants.com.au](mailto:enquiries@talisconsultants.com.au)



Environment  
Institute of  
Australia and  
New Zealand



Local Government  
PROCUREMENT  
APPROVED CONTRACTOR



IPWEA  
INSTITUTE OF PUBLIC WORKS  
ENGINEERING AUSTRALIA

 localbuy<sup>®</sup>