



ENVIRONMENTAL INVESTIGATIONS

The Talis Environmental Investigations team provides comprehensive environmental site assessment services across Australia, with offices in Perth, Nowra, Newcastle, Brisbane, and other strategic bases. Our expertise covers a wide range of integrated solutions that are tailored to our clients' needs:

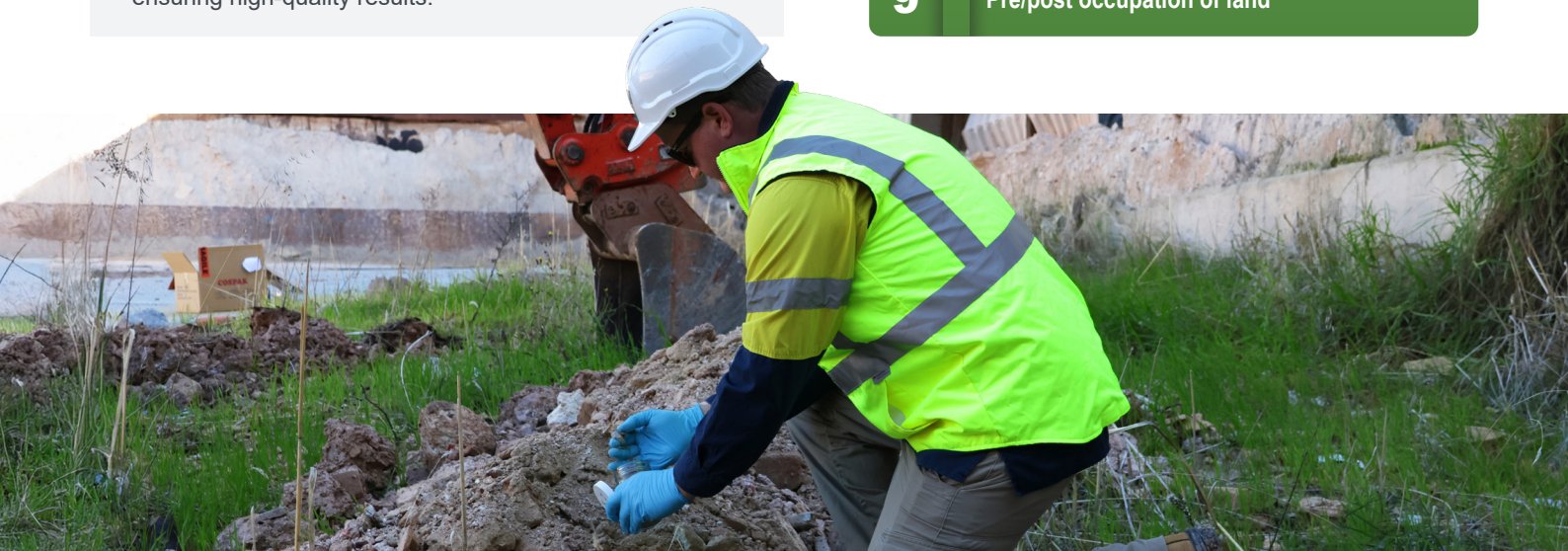
- Contaminated site assessments
- Hydrogeological evaluations
- Geotechnical investigations
- Acid Sulfate Soils investigations

Our experienced consultants bring extensive knowledge across the commercial/industrial, mining, land development, and waste management sectors, ensuring statutory compliance and strategic advice to achieve project goals. With diverse backgrounds and a strong understanding of government agency requirements, our team is well-equipped to manage projects efficiently.

By delivering integrated site investigations that address both contaminated land management and ground engineering requirements, saving time and costs while ensuring high-quality results.

When Environmental Investigations are Necessary

1	Changes in land-use and development of land
2	Land and property transactions
3	Due diligence for mergers and acquisitions
4	Ongoing and end-of-life industrial activities
5	Statutory and regulatory requirements/notices
6	Contaminated land assessments
7	Risk assessments and mitigation
8	Long-term site monitoring
9	Pre/post occupation of land



OUR KEY INVESTIGATION SERVICES

Our consultants offer vast knowledge and experience in conducting investigations, providing clear and practical advice to help navigate the often complex requirements of regulatory guidelines.

We evaluate potential contamination and, when identified, thoroughly investigate its nature, extent, and severity. We then support the development of tailored remediation and rehabilitation strategies. Our areas of specialisation include:

CONTAMINATED SITE INVESTIGATIONS

- Preliminary Site Investigations
- Detailed Site Investigations
- Sampling and Analysis Quality Plans
- Human Health and Ecological Health Assessments
- Remediation Option Appraisals
- Remediation Strategies, Validation, and Supervising
- Groundwater and Surface Water Monitoring
- PFAS Assessment and Management
- Landfill Gas and Vapour Assessment
- Pre/post Occupation Assessments
- Technical and Peer Review
- Ongoing Site Management Plans
- Waste Classification and Soil Management

GEOTECHNICAL INVESTIGATIONS

- Site Classification
- Lot/site classification to AS2870-2011
- GITA Level 1 & 2 Earthworks Supervision
- Laboratory testing on soils and rock

HYDROGEOLOGICAL INVESTIGATIONS

- Hydrogeological Intrusive Investigations
- Aquifer Parameter Testing
- Geochemical Assessment
- LandSim modelling
- Hydrogeological Risk Assessments
- Compliance Monitoring and Reporting
- Technical and Peer Review
- Dewatering Assessment
- Irrigation Sustainability Assessments

ASBESTOS INVESTIGATIONS

- Asbestos in Soils Investigations
- Natural Occurring Asbestos Assessment
- Fibrous Air Quality Assessment
- Remediation Strategies, Validation, and Supervision
- Asbestos Management Plans
- Asbestos Clearance Inspections

ACID SULFATE SOILS INVESTIGATIONS

- Acid Sulfate Soil Investigations
- Baseline Groundwater Assessment
- Development of Monitoring Programs
- Acid Sulfate Soil Management Plans
- Regulatory Compliance
- Dewatering Assessment

Our Consultants

25+ Consultants

Specialising in approvals, compliance, and investigations.

+300 Investigation Projects Delivered

Successfully completed environmental investigation projects across the nation.

WEST COAST

Andrew Mack

Director and National Environment Lead

✉ andrew.mack@talisconsultants.com.au

📍 604 Newcastle Street, Leederville, WA 6007

☎ 1300 251 070

EAST COAST

Darrell Newton

East Coast Investigations Lead

✉ darrell.newton@talisconsultants.com.au

📍 58 Clearly St, Hamilton NSW 2303

☎ 1300 251 070

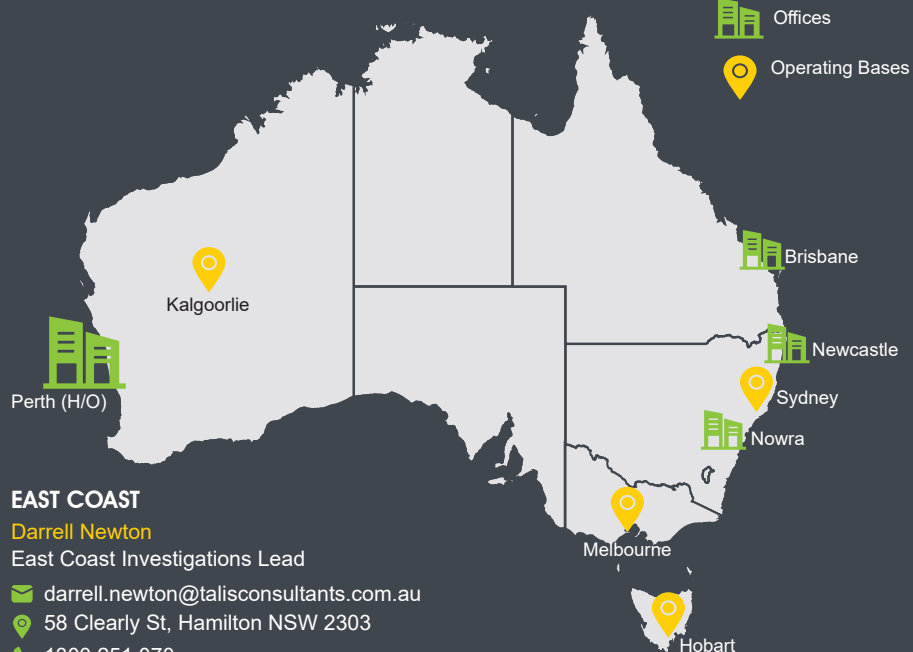
LEGEND



Offices



Operating Bases



We work for a variety of clients, small and large, across different sectors. Some of the industries we work with include:

- Oil and Gas
- Industrial, Energy & Manufacturers
- Transport, Rail & Freight
- Mining
- Local and State governments
- Tertiary Institutions
- Land Development
- Renewables
- Waste Facilities

INVESTIGATION KEY PROJECTS

Since our establishment in 2012, Talis has completed numerous environmental investigations, delivering technically sound, cost-effective solutions that thoroughly evaluate and mitigate liabilities and risks.

Highlighted below are key projects Talis has delivered across various sectors and regions nationwide.

CLIENT: 29 Metals Limited
PROJECT: Site Works (WA)

Talis was engaged by 29 Metals Limited to perform site works for data collection, verifying cleanup levels at lease area 21 in Port of Geraldton, WA.

Talis developed a Sampling Analysis and Quality Plan (SAQP), outlining methodologies for internal building surface validation, external infrastructure validation, soil investigation, and drainage infrastructure validation.

CLIENT: WJ Graham Family Trust
PROJECT: Esperance PSI & DSI (WA)

Talis was commissioned by the WJ Graham Family Trust to conduct a Preliminary Site Investigation (PSI) for the Esperance site, assessing potential contamination risks to ecological and human health.

Following the PSI, Talis performed a Detailed Site Investigation (DSI) to precisely delineate and characterize contamination levels through comprehensive soil and groundwater investigations.

CLIENT: M8 Sustainable Limited
PROJECT: Detailed Site Investigation (WA)

Talis was engaged by M8 Sustainable Limited to conduct a Detailed Site Investigation (DSI) at their Maddington, WA site.

This investigation aimed to advance contaminated site assessments to meet Department of Water Environmental Regulation (DWER) requirements, confirm site suitability for current and future uses, evaluate risks to both on-site and off-site sensitive receptors.

CLIENT: Hanroy
PROJECT: ASSMP (WA)

Talis was commissioned by HanRoy to prepare an acid sulfate soils management plan (ASSMP) for the construction of a second car dumper (CD2) at their facility in Port Hedland.

The CD2 Acid Sulfate Soils Management Plan Procedure was prepared following contemporised and publicly available guidance material, and incorporation of information from previous reports.

CLIENT: City of Kalamunda
PROJECT: Asbestos Visual Inspection (WA)

Talis was engaged by the City of Kalamunda to complete an asbestos containing materials (ACM) visual inspection and collection by hand (emu-bob) investigation at Ledger Road Reserve, which has been the subject to significant illegal dumping of wastes.

The findings of this report will inform a review of the existing site management plan for the purposes of updating the current asbestos management strategy.

CLIENT: Landfill Gas & Power (EDL)
PROJECT: CEMP (WA)

Landfill Gas and Power Pty Ltd commissioned Talis to prepare a Construction Environmental Management Plan (CEMP) for the decommissioning of the Kalamunda Power Station.

According to DWER's Contaminated Sites Guidelines, power stations are 'potentially contaminating industries, activities and land uses.' Therefore, the client was looking to assess the contamination status of the Site following its decommissioning.

CLIENT TESTIMONIAL

"[Camilo] was an absolute pleasure to work with. He was very professional throughout the project. He always responded in a timely manner and double checked that I was happy with the works completed to date. He is the kind of consultant I don't see often nowadays and wish there were more like him." - **Barbara Heemink, HanRoy Environmental and Approvals Specialist**

INVESTIGATION KEY PROJECTS

CLIENT: Federation Council
PROJECT: Groundwater Investigations/Monitoring (NSW)

Talis was engaged by Federation Council to conduct groundwater investigations and monitoring at multiple waste management facilities in NSW from 2019 to 2021.

The aim was to assess contaminants linked to landfilling and identify potential impacts on groundwater, as well as related human and environmental risks. Tasks included gauging, purging, sampling groundwater wells, laboratory analysis, and report preparation.

CLIENT: Leeton Council
PROJECT: Investigations/Monitoring (NSW)

Talis was commissioned by Leeton Council to undertake a groundwater review at their waste management facility located in NSW. The Council is required to assess groundwater from a network of four groundwater monitoring wells, on a quarterly basis.

There were a range of analytes that required testing during each round, primarily associated with indicators of landfill leachate.

CLIENT: Bega Valley Shire Council
PROJECT: Hydrogeological Investigations (NSW)

Talis was commissioned by the Bega Valley Shire Council to undertake a hydrogeological investigation to provide relevant data for inclusion into the expansion of their Central Waste Facility project located in NSW.

Talis conducted the investigation with the aim of assessing the groundwater levels within the study area, potential constraints to the proposed development, and potential constraints to the surrounding environment and groundwater users.

CLIENT: East Gippsland Shire Council
PROJECT: Geotechnical & Hydrogeological Site Investigation (VIC)

Talis was commissioned by East Gippsland Shire Council to conduct geotechnical and hydrogeological site investigations to gather essential data for the proposed construction of a waste transfer facility.

The investigations involved the drilling and installation of groundwater wells, excavation of trial pits, recording field observations, collecting samples of the subsurface strata and groundwater, in situ geotechnical & hydrogeological testing, and laboratory testing of select samples.



Environment
Institute of
Australia and
New Zealand



Local Government
PROCUREMENT
APPROVED CONTRACTOR

1300 251 070

www.talisconsultants.com.au
enquiries@talisconsultants.com.au